

## The Bawm of Bangladesh



The Bawm live in southeast Bangladesh, with many living in various places of Bandarban district but about one-third living in parts of Rangamati district. The Bawm people speak their own language, and they have some written materials in their language such as the Bible, hymns, small books, etc. 100% of the Bawm call themselves Christian. Most of them are jhum (slash-and-burn shifting agriculture) farmers. Some of them are teachers, NGO workers, or pastors, preaching the Gospel to the Mru, to the Khumi, and to other ethnic communities of the Chittagong Hill Tracts.

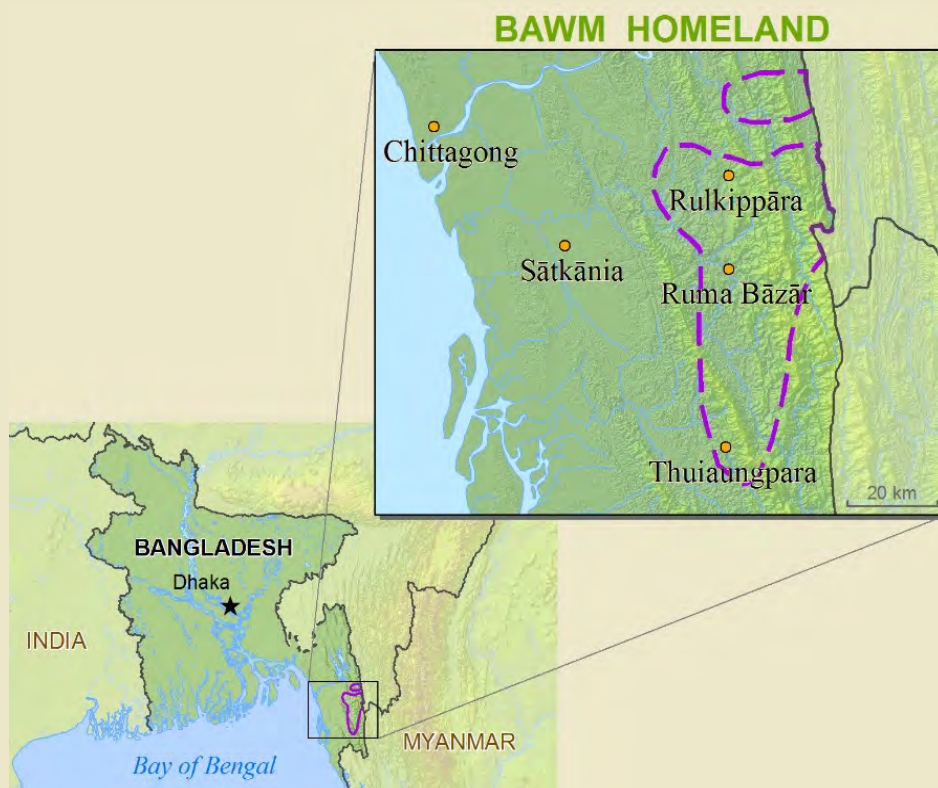
**Primary Religion:**  
Christianity

**Disciples (Matt 28:19):**  
70%

**Churches:**  
Most villages

**Scripture Status (Matt 28:20):**  
Complete Bible

**Population (date):**  
10,000 (2007)



## The Bawn of Bangladesh

---

### Have They Heard The Gospel?

Call Themselves Christian	100%
Believe In Jesus As God And Only Savior	70%
Believe In The Local Traditional Religion	0%
Have Not Heard Who Jesus Is	0%

## The Bawn of Bangladesh

### Group Description

#### Geography & Environment

Location The Bawm live in the hilly areas. Their villages may be near roads, along riverbanks, or along the edge of the hills. A number of Bawm villages are situated in the valley.

#### Literacy

Percent Monolingual 10%  
Literacy Attitude Very Receptive  
Literacy Program Yes  
Comment The literacy rate among Bawm speakers is nearly 100% in their mother tongue and 35% in Bangla.

#### Economics

Occupation Farmers, NGO workers, businessmen, teachers, pastors  
Income Sources Handicrafts and crops that they produce in their field.  
Trade Partners Bengalis and other ethnic community people such as the Marma and Khumi  
Products / Crafts Products: rice, ginger, turmeric, vegetables, pineapple, oranges, etc. Crafts: bags, long skirts, shawls, etc  
Modernization / Utilities A few have Western musical instruments, computers, TVs, motorbikes, cell phones, etc.

#### Community Development

Health Care (Quality) Fair  
Diet (Quality) Fair  
Water (Quality) Poor  
Comment Most of them are living in very remote areas and using water from springs, lakes, and rivers.  
Electricity Few villages have electricity  
Transportation Public vehicle, walking, boat  
Energy / Fuel (Quality) Very Good  
Family Structures Patrilineal  
Neighbor Relations Very good relationship with neighbors  
Authority / Rule Father is the head of the family  
Cultural Change Pace Slow  
Identification With National Culture District  
Self Image Prestigious  
Celebrations Since they are Christian they celebrate Christian festivals.  
Recreations Bible study, sitting together, discussing, hunting, cooking  
Attitude To Outsiders Somewhat receptive  
Attitude To Change Somewhat receptive

## The Bawn of Bangladesh

---

### Society & Culture

Family Structures	Patrilineal
Neighbor Relations	Very good relationship with neighbors
Authority/Rule	Father is the head of the family
Cultural Change Pace	Slow
Identification With Culture	Distinct
Self Image	Prestigious
Celebrations	Since they are Christian they celebrate Christian festivals
Recreations	Bible study, sitting and chatting, hunting, cooking
Attitude To Outsiders	Somewhat receptive
Attitude To Change	Somewhat receptive

### Youth

Labor and tasks (6-12 year olds)	Staying home, babysitting, helping parents, household work
----------------------------------	--

### Education

Comment (Primary Schools)	Almost every village has a primary school
Comment (Primary Schools)	Almost all school-aged children go to school
Language Of Instruction Early Years	Bangla
Comment	Children learn to read and write Bawm in Sunday School

## The Bawn of Bangladesh

---

### Status of Christianity

#### Church Growth

Comment on Church Growth      There is a church in almost every Bawm village

#### Religion And Response

Attitude To Christianity      Very Receptive

#### History Of Christianity In Group

Year Began      1921  
By Whom      North East India General Mission

#### Scripture

Translation Status      Completed  
    Comment      Bible is in print form  
Recording      Yes  
Literature      Yes  
Radio      No  
TV      No

#### Mission & Churches

Organization Name      Evangelical Christian Church  
Country of Origin      Bangladesh  
Year Started      1965