

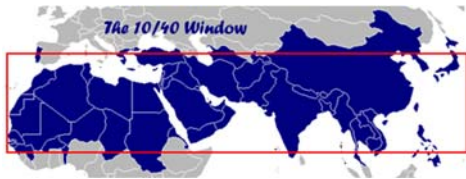
Great Commission Challenge

1. There are about 17,000 ethnic people groups in the world. T / F

2. About 800 people groups are still considered unreached. T / F



3. There are over 5,900 unreached people groups in the 10/40 Window. T / F



4. 81% of non-believers do not personally know a Christian. T / F

5. India has 4 times as many people groups as any other country in the world. T / F



6. Buddhism is the fastest growing major religion in the world. T / F



7. Genuine Christ-followers are growing faster than Islam. T / F

8. For every \$1 dollar of Christian giving to all causes only about \$.05 goes to finance pioneer church planting among unreached peoples. T / F



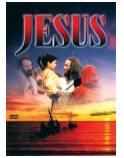
9. Over 20% of the world's languages have no Scripture and need Bible translation to begin. T / F



10. At the current rate of translation, every language will have a complete Bible by 2025. T / F



11. The *Jesus Film* is the most translated and most viewed film in history. T / F



12. There are more people alive today that do not know Christ than at any other time in history. T / F

13. There are as many Christians in China as in North America. T / F



14. In the year 1800, 99% of all Christians lived in Europe and North America. T / F

15. Less than 1 in 10 cross-cultural foreign missionaries minister among unreached people groups. T / F



Answers

1. True – In Matthew 28:19 Jesus said go and make disciples of all these ethne [people groups].
2. False – there are actually about 7,000 unreached people groups. Unreached people groups are less than 2% Evangelical and less than 5% Christian Adherent.
3. True – 5 out of 6 unreached people groups are in the 10/40 Window.
4. True – based on research by the Center for the Study of Global Christianity.
5. True – India has over 2,500 different people groups. China is second with about 540. Caste forms a great barrier to the spread of the Gospel in South Asia.

6. False – Islam is the fastest growing major religion at 1.9% annually. General Christianity is growing at 1.2% annually.
7. True – Christ-followers are growing at 2.6% annually and faster than any major religion.
8. False – actually less than one penny of every dollar given to all Christian causes goes to finance pioneer church planting among unreached people groups.
9. True – of the approximately 7,097 languages, about 1,575 (22%) do not have any Scripture.
10. False – Bible translators hope to begin Bible translation in every language that needs it by 2025. A complete Bible in every language will take significantly longer.

11. True – The Jesus Film has been translated into over 1,700 languages and viewed by several billions individuals.
12. True – In 1900 there were 1 billion non-Christians in the world. Today there are over 5 billion.
13. True – about 100 million Christians in each.
14. True – In contrast, by 2018 23% of Christians live in North America and Europe while 77% live in Asia, Africa and Latin America. The majority of the Body of Christ is now in the Global South.
15. True – over 90% of missionaries work among people groups that are not considered unreached.